

MACRO TRAC FOR THE MILITARY

The days of building permanent concrete slabs to support temporary structures are over!

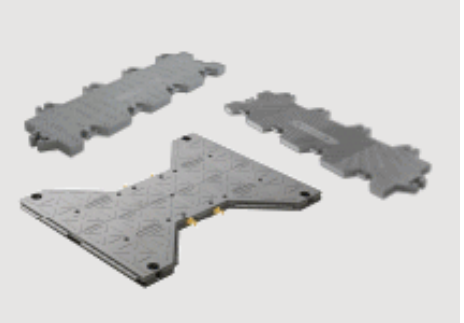


(IPL) **MACROTRAC™**

The most versatile matting system on the market!

www.macrotrac.com

[Learn more](#)



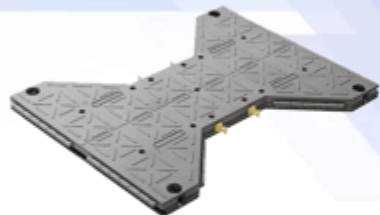
- **Macro Plastics** was Founded in 1988.
- Worlds largest producers of Plastic Agriculture and Industrial Bins.
- Operates three manufacturing facilities in the US> Shelbyville, KY, Union Gap, WA and Fairfield, CA
- Joined the IPL group of companies in 2017 providing us with more resources, manufacturing facilities and increased capacities.
- **Macro Plastics** possesses 6 of the 10 largest Injection Molding machines in the world.
- **MacroTrac** was added to the Macro Plastics portfolio of products in 2010.
- **MacroTrac** provides matting solutions to all military branches and to our allies.

I-Trac

Part of the IPL MacroTrac™ family of portable roadway and manually deployable matting solutions in the Americas. I-Trac is a state-of-the-art modular heavy duty access matting that enables vehicular traffic over inhospitable and unsafe ground. I-Trac has quickly become the temporary matting solution of choice in a variety of industries including Construction, Oil and Gas, Utilities, Events and Military.

Features & Benefits

- Most flexible and highly capable roadway systems on the market
- Extreme strength to weight ratio
- Each panel weighs only 38 pounds
- Quick and easy to install and extract
- No equipment required for installation
- Flexible design allows for manual deployment or mechanical deployment in pre-assembled sections
- Heavy Duty Access Matting



Specifications

Panel Size (in): 47.5 (L) x 36.3 (W) x 2.1 (H)

Weight Per Panel (lbs): 38

Area Per Panel (sq ft/pc): 8.47

Static Compression Capacity (lbs/sq ft): 86,400*

Shipping (sq ft):

Trailer 53': 9,655.8

Flatbed 48': 9,655.8

*Solid sub-surface. Capacity varies depending on sub-surface

I-Trac™

Test Data – Laboratory Conditions

Resin: High Impact Strength Polypropylene Copolymer

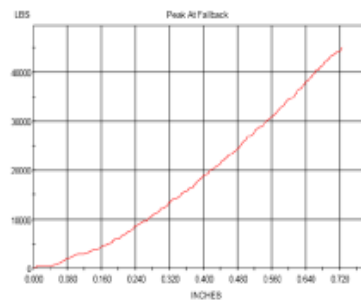
Tensile Strength	3,340 PSI
Impact Strength	No Break
Tensile Modulus	160,000 PSI

I-Trac Compression – 24 hrs using 30,000 lbs

Compression Strength	625 PSI **product did not fail
Deflection at Peak Force	.521 in

I-Trac Compression – Peak at 10% fallback using 6"x6" steel plate

Compression Strength	45,000 lbs **product did not fail
Deflection at Peak Force	.643 in
Compression Strength	90,000 lbs per sqft (calculated)



** compression tester max capability 45,000 lbs peak force

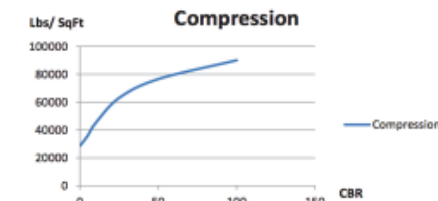
I-Trac™

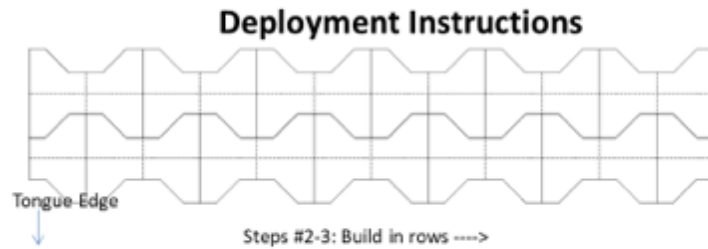
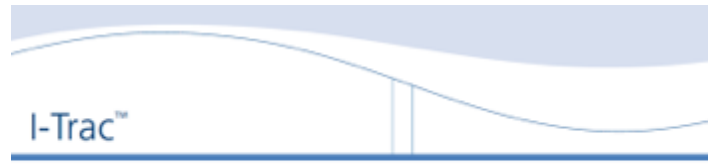
Test Data – Field Conditions

The following capacity figures provide guidelines for load capacity over various ground conditions.

Load Capacity Lbs/ SqFt**	Load Capacity PSI **	CBR Values
90,000	625	100 – Solid Sub-Surface
76,500	531	50 – Firm Sub-Surface
63,000	437	30 – Sandy Soil
45,000	312	20 – Clay Soil
28,750	200	10 – Wet/Muddy Sub-Surface

** values calculated using physical compression figures obtained at : CBR 0 (unsupported) and CBR 100 (fully supported steel sub-surface)





- Step #2:** Chose corner of application to begin build
Tip: Build with tongue edge (male edge) forward
- Step #3:** Build in rows as illustrated



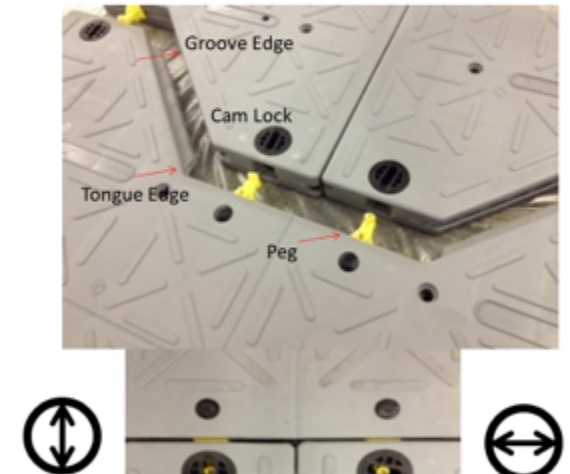
Horizontal Split (Short Half) Vertical Split (Long Half)



Panels are designed with solid cut lines to split panels horizontally or vertically.
Panels can be cut on band saw or table saw.



Description of Components

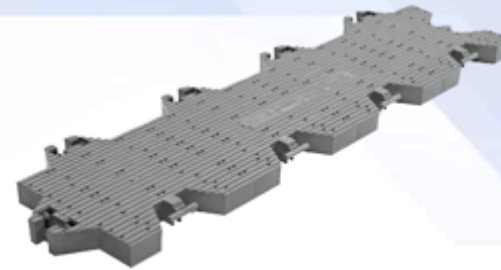


DESCRIPTION OF I-TRAC COMPONENTS

SUPA-TRAC MATTING SYSTEM AND COMPONENTS

MACRO TRAC FOR THE MILITARY

Supa-Trac



Part of the IPL MacroTrac™ family of matting products in the Americas, Supa-Trac turf protection mats is uniquely durable, yet lightweight, making it the ideal matting solution for turf protection, tent flooring, or anywhere that heavy foot traffic and equipment will travel. Supa-Trac can support the weight of forklifts with pneumatic tires, light trucks, and vehicular traffic. Panels allow light, air, and water to reach the turf, keeping grass alive while protecting turf from being trampled by pedestrians or vehicles. Supa-Trac is suitable for natural and synthetic turf, indoors or out.

Features & Benefits

- Rapid deployment with a minimum amount of manpower
- 60% lighter weight than aluminum counterparts
- Easy to transport and store
- Can be deployed in rolls or slabs
- No special skills or special tools required for installation
- The capacity to support vehicles up to 3.5 tons per axle



Specifications

Panel Size (in):

38 (L) x 11 (W) x 1.4 (H)

Shipping (sq ft):

Trailer 53': 21,969

Weight Per Panel (lbs): 4.4

Flatbed 48': 21,969

Area Per Panel (sq ft/pc): 2.26**Static Compression Capacity**

(lbs/sq ft): 36,000*

*Solid sub-surface. Capacity varies depending on sub-surface.

SUPA-TRAC X-PRESS MATTING SYSTEM

Specifications

Panel Size (in):

39 (L) x 11.3 (W) x 1.1 (H)

Shipping (sq ft):

Trailer 53': 27,600

Flatbed 48': 27,600

Weight Per Panel (lbs): 3.3**Area Per Panel (sq ft/pc): 2.3****Static Compression Capacity**

(lbs/sq ft): 36,000*

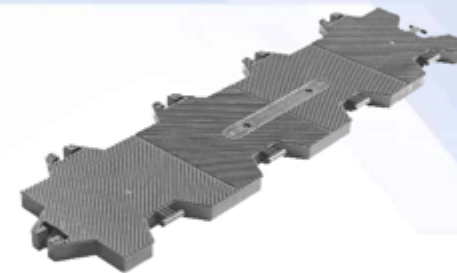
*Solid sub-surface. Capacity varies depending on sub-surface.

Supa-Trac X-Press

Part of the IPL MacroTrac™ family of portable flooring and temporary roadway products in the Americas, Supa-Trac X-Press is the ultimate lightweight pedestrian matting system. Sharing the traditional Supa-Trac design, it conforms to almost all ground types and conditions, yet it is thinner and has a lighter panel weight. At only 3.3 pounds per panel, this portable lightweight matting product is easy to handle and requires no tools for installation making it among the fastest mat on the market to install and remove.

Features & Benefits

- Ideal, cost-effective solution for nearly all event applications
- Lightweight matting, portable, and durable
- Quick installation and extraction
- Product can be stored indoors or out for years of flexible use
- Edging ramps are available for the elimination of trip hazards and ADA compliant access
- World-class top surface design for traction
- Ideal for artificial turf, soil, sand or gravel, and all hard-standing surfaces



RECENT PROJECTS

- **RECENT PROJECTS**

- **Tyndall AFB**- Hurricane Rebuild-14 Supa-Trac Structure Floors and 4 I-Trac Vehicle Maintenance Floors
- **Schofield Barracks**- Base Restoration Project- Shelter Floors- Supa-Trac and I-Trac
- **San Clemente Island**- Hover Craft I-Trac Pad for the US Navy
- **Niger- USAF**- I-Trac Tarmac and Hangar Floor- Quick Deployed Air Base
- **Kandahar**- Multiple I-Trac Installations
- **Travis AFB**- Base Construction Projects with I-Trac
- **Department of Texas Prison System**- I-Trac Roadways for various construction Projects
- **Afghanistan**- Multiple Quick Deployed Supa-Trac Helipads and I-Trac Construction Roadways
- **Area 51**- Tonopah Maintenance shelter with drive on apron





I-TRAC MILITARY APPLICATIONS 86,400 LBS/SQ FT





SUPA-TRAC MILITARY APPLICATIONS - 36,000 LBS/SQ FT





<https://www.youtube.com/watch?v=Rv6dBWfOl2g>



<https://www.youtube.com/watch?v=crxIB0lkkC4>



<https://www.youtube.com/watch?v=Y3R4aHCwZhk>

I-TRAC IS PROVEN IN THE COMMERCIAL INDUSTRY

FUTURE SOLUTIONS & Purchase Contracts

INNOVATION AND TECHNOLOGY- Committed to READINESS

- **AMX PROGRAM-** Collaborating with gov't engineers in designing a manually deployable, heavy-duty mat half the thickness of I-Trac lighter and easier to install than AM2,. Mat will be capable of handling F-15 and C17 aircraft on Taxiways, Parking Aprons, and in Maintenance Hangars
- **HIGH HEAT TOLERANCE MATTING-**Dedicated to designing a mat capable of handling high heat engine blast from a VTO aircraft such as the V-22 Osprey.
- **FRP MAT** - Collaborating with gov't engineers in improving the design and enhancing the manufacturing process of FRP mats for ADR mission sets.
- **LOGISTICS SUPPORT-** Through innovative, collapsible return shipping bins. Working with logistics experts in the Military to maximize efficiencies of transport of goods and equipment.

PURCHASE CONTRACTS

- Tailored Logistics Support (TLS)
- FEDMALL
- NSN