

«AMP»

ATLAS Mission Platform (AMP)



DATA First
From the Enterprise, to the **EDGE**

THE PROBLEM

Heaps of Data - Operating at greater than petabyte scale

Disparate Data Sources - Varied user base on dozens of systems

Complex Security Access - Various access control policies

Search Anxiety - Querying dozens of systems, wasting time conditioning data

Low or No Network Operations - data analysis needed in Forward Operations with little or no SDN bandwidth

THE SOLUTION

Heaps of Data - uses a modern, distributed compute environment, with both on-premise & secure cloud SaaS versions

Disparate Data Sources - Supports 1000's of data types feeding a unified data layer

Complex Security Access - AMP persists access control eliminating wrongful access

Search Anxiety - A single pane of glass for your multi-source data, accelerating time to insight

Low or No Network Operations - available in a man-portable Expeditionary Server version: fits in overhead passenger aircraft compartments

THE RESULT

This data-focused approach, coupled with interoperability via a well documented API maximizes data experiences at enterprise hubs, and off-line for remote environments. Never turning our back on those operating on low bandwidth networks at the edge.

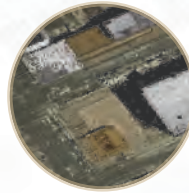


Specific

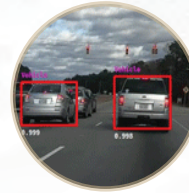
AMP provides a suite of mission-specific data processors tuned for the expeditionary user. These data pipelines are designed to the specifications of multi-disciplined analysts and users on the go.



IMAGERY



ELEVATION



VIDEO



TEXT

Immersive

AMP provides intuitive workflows enabling users to **discover, visualize, analyze** and **deploy** data for use in their finishing tool of choice.



DISCOVER



VISUALIZE



ANALYZE



DEPLOY

AMP APPS

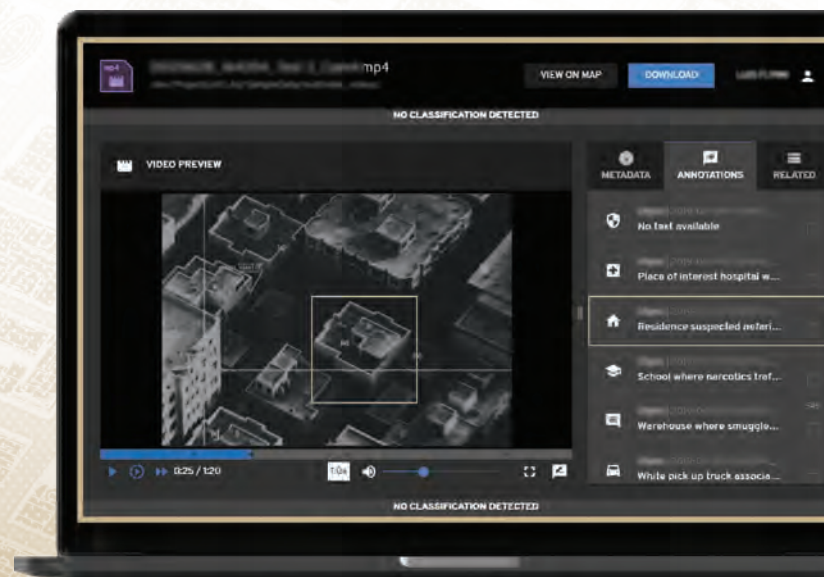
3rd Party APPS

Access

AMP extends its reach by exposing the ecosystem to developers, data scientists, and users through a robust, well documented API.

KEY FEATURES

- High performance distributed processing, memory, and storage
- Available in three installation versions: on-premise installation, Secure Cloud SaaS, or man-portable Expeditionary Server for FOB operation with low or no network .
- Quickly provisions data sets for deployment on tablet devices for specific missions
- **Accredited for use on classified Dept. of Defense networks**
- Supports advanced entity extraction: geographic coordinates, place names, groups, individuals, and events
- Advanced transcoding options
- Extensible, open API
- Indexes and exposes files and streaming data sources



For more information about AMP:
sapns2.com/amp