

A close-up photograph of a dandelion seed head, showing the intricate structure of the seeds and the central receptacle. The image is partially obscured by a green rectangular overlay.

SESSION SMART™ NETWORKS

Experience-based. Cloud-enabled and Secure.

Boris Kilimnik – SSR Federal Sales Director

JUNIPER
NETWORKS

Engineering
Simplicity

What do we need in a “Mission First” network?

AGILITY AT SCALE

EXPERIENCE-BASED



SECURE



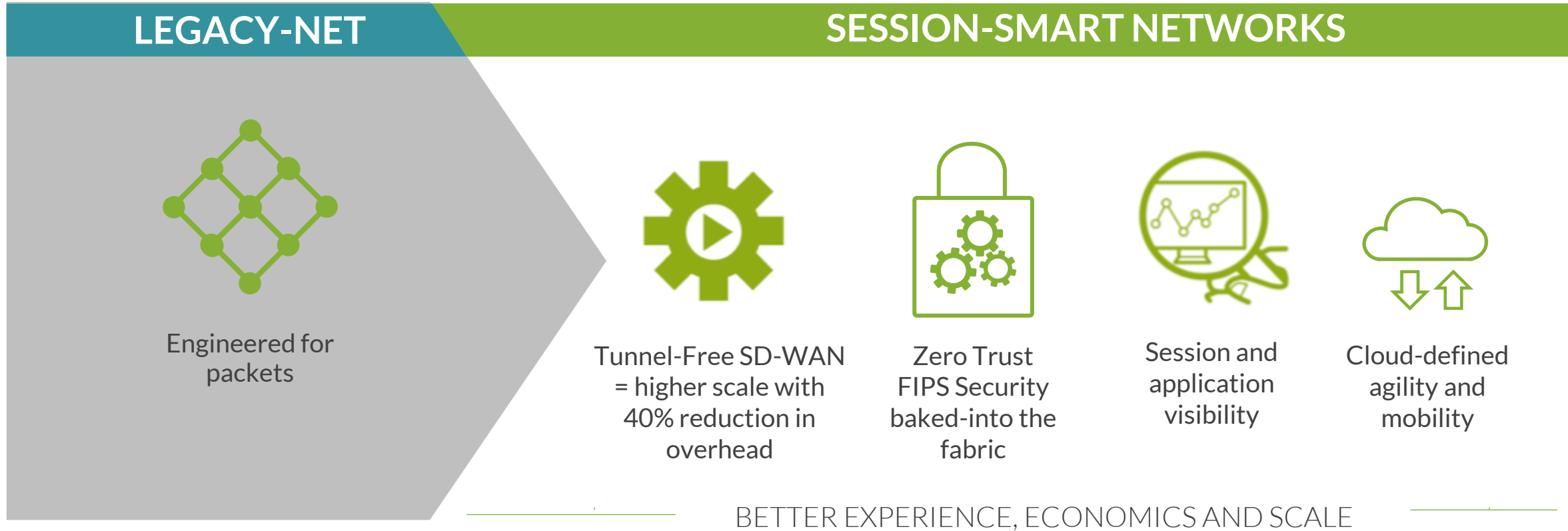
CLOUD-ENABLED



DEEP VISIBILITY AND INSIGHTS

AI/ML Driven

Transform the router – transform your network



SESSION SMART ROUTERS – A NEW BREED OF ROUTER

Juniper SSR

Mission Planners



Modify Service, ZeroTrust, SLA ...
(Security/QoS/Path ...)

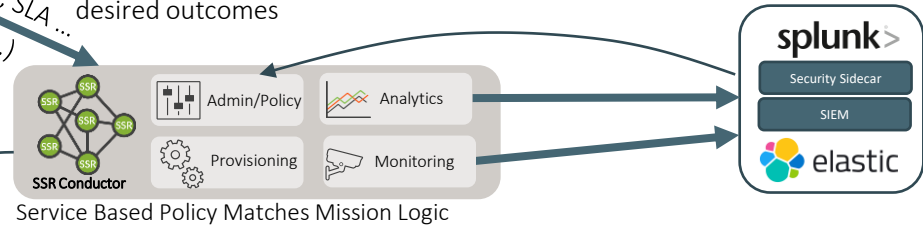
Adjust network behavior to instantly implement desired outcomes

- Simplicity**

 - Tunnel Free → 0 Overhead = improved user experience & bandwidth
 - **Who / What / How** - Policy Architecture
 - Instantly translate changing mission needs to network fabric behavior

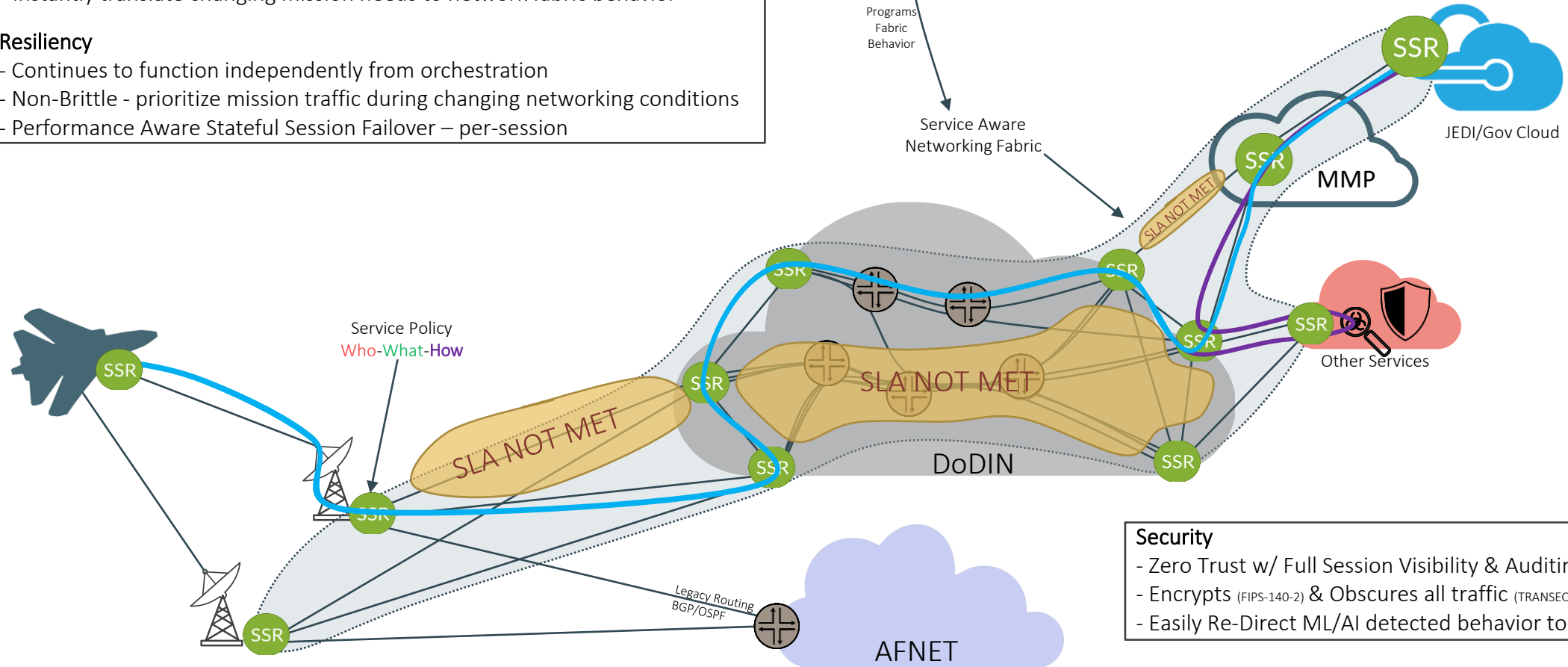
Resiliency

 - Continues to function independently from orchestration
 - Non-Brittle - prioritize mission traffic during changing networking conditions
 - Performance Aware Stateful Session Failover – per-session



Programs Fabric Behavior

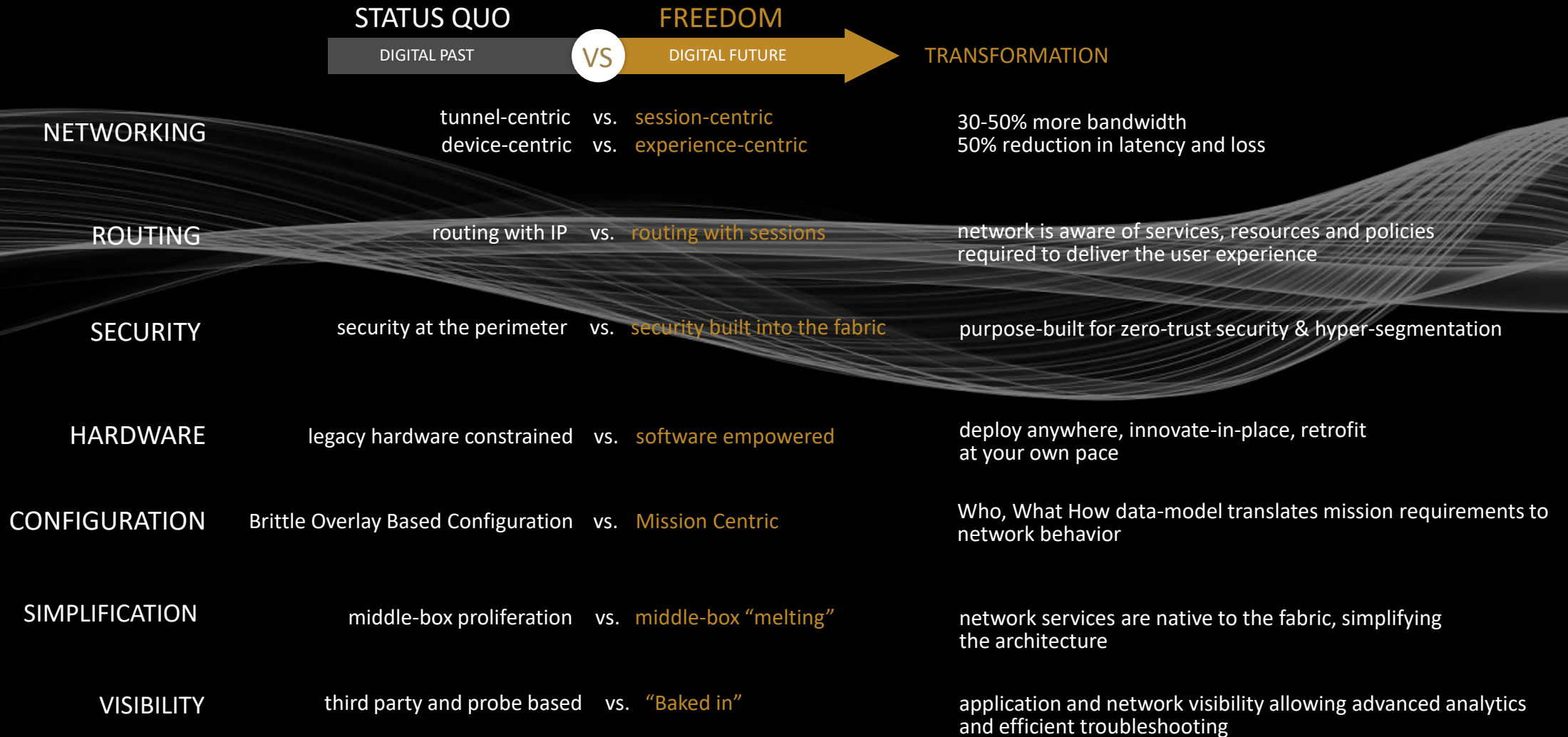
Service Aware Networking Fabric



- Security**

 - Zero Trust w/ Full Session Visibility & Auditing - Hop by Hop Auth
 - Encrypts (FIPS-140-2) & Obscures all traffic (TRANSEC/COMSEC)
 - Easily Re-Direct ML/AI detected behavior to enhanced security & capture

SESSION-SMART NETWORKING DELIVERS A BETTER EXPERIENCE.





Thank you

JUNIPER[®]
NETWORKS

Engineering
Simplicity